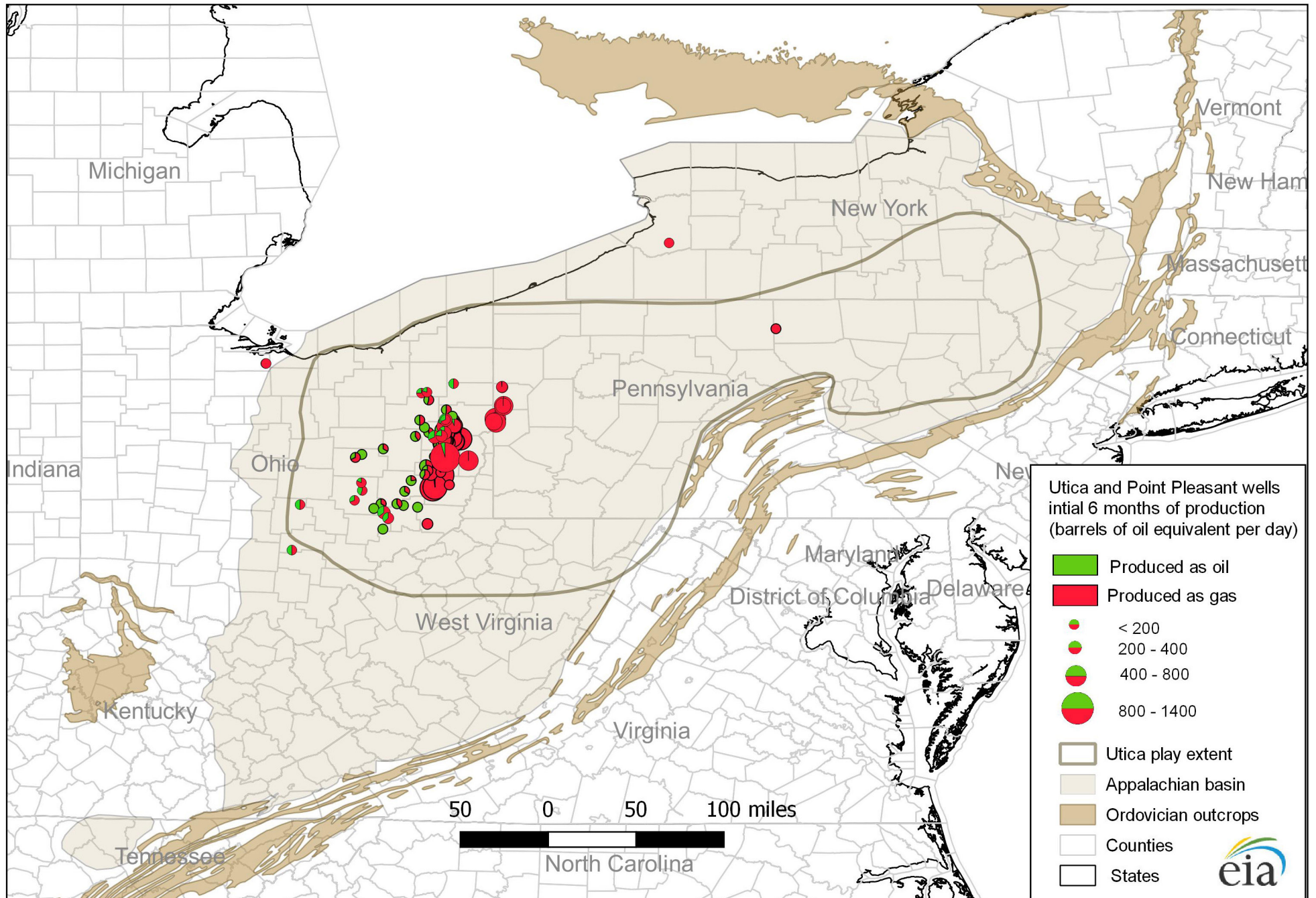


Utica and Point Pleasant Production through December 2012



Source: U.S. Energy Information Administration based on DrillingInfo Inc., Appalachian Oil and Natural Gas Research Consortium, and U.S. Geological Survey.

Note: EIA calculates the daily production rate for each well using the initial six contiguous months of liquid and gas production expressed in barrels of oil equivalent per day.