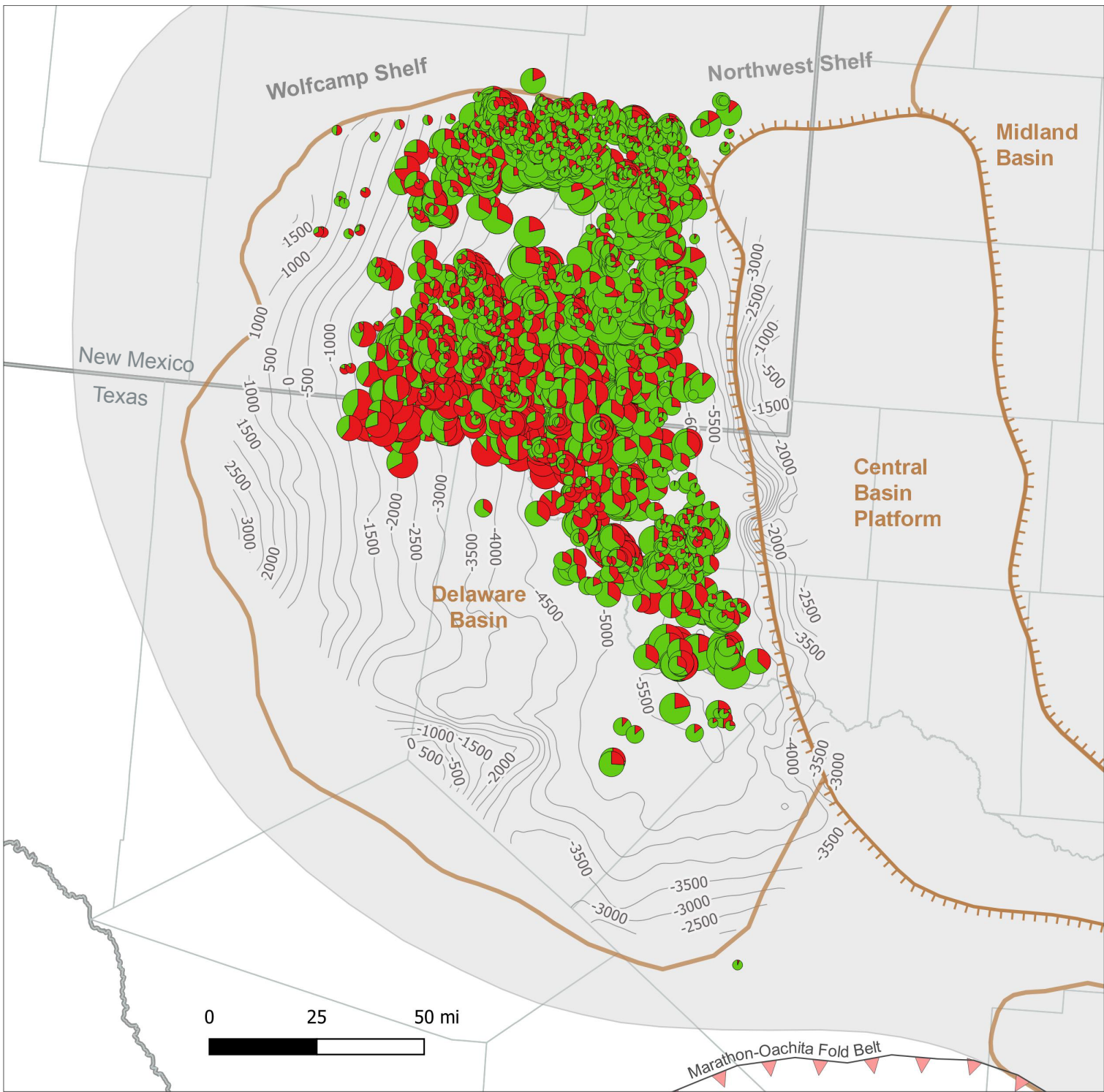


Bone Spring Production 2005 through 2015



Bone Spring wells initial 12 months of production (barrels of oil equivalent per day)

- Produced as oil
- Produced as gas

- < 50
- 50 - 200
- 200 - 800
- 800 - 1000
- > 1000

- Permian Basin
- Elevation of Bone Spring formation top (feet)
- Marathon-Oachita Fold Belt

- Sub-basins
- Central Basin Platform
 - Delaware and Midland Basins
 - Counties
 - States

Source: U.S. Energy Information Administration based on DrillingInfo Inc.

Note: EIA calculates the daily production rate for each well using the initial twelve contiguous months of liquid and gas production expressed in barrels of oil equivalent per day.

Updated: 7/25/2019

